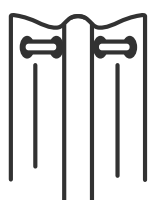


# Made to Measure Curtains



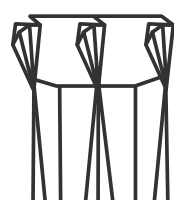
How to measure.

## 1 Choose Header Type.



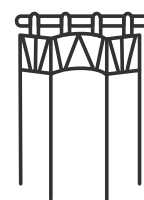
### Eyelet

Suitable for poles only up to 32mm in diameter (Eyelet diameter is 40mm).



### Pinch pleat

Suitable for curtain tracks and poles.

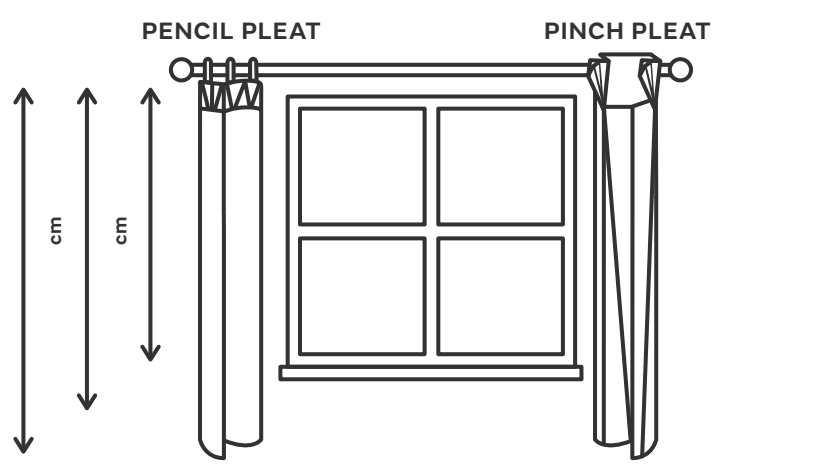


### Pencil pleat

Suitable for Curtain tracks and poles.

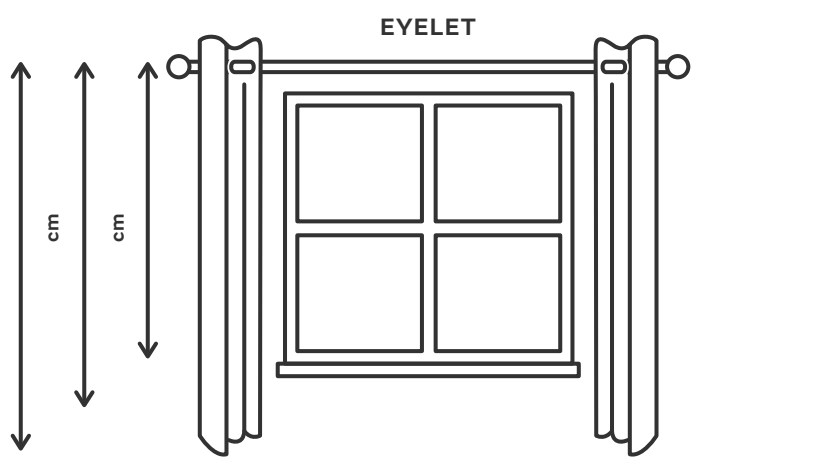
## 2 Measure the curtain drop.

Decide how wide you want your curtains to be. Depending on the type of pole/track you choose:



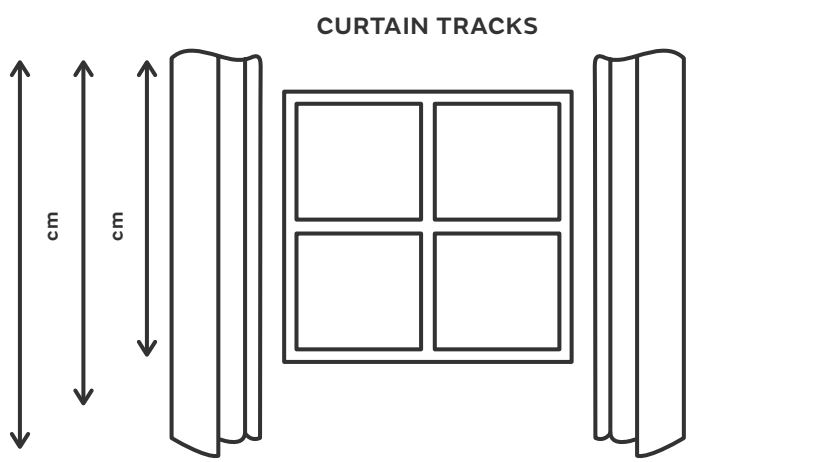
### Pencil & Pinch Pleat.

For pencil pleat or pinch pleat, measure in cm from the bottom of the ring to the desired drop.



### Eyelet.

For eyelet curtains measure in cm from the top of the pole to the desired drop.



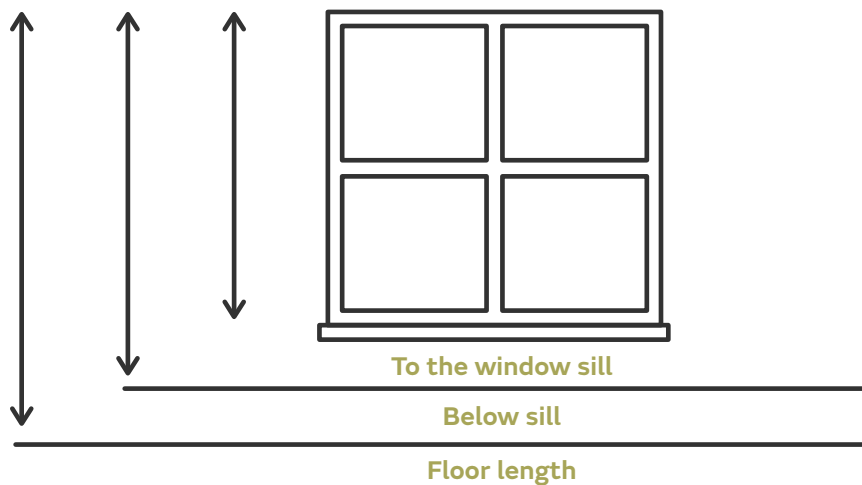
### Curtain Tracks.

For curtain tracks measure in cm from the top of the track to the desired drop.

## 3 Decide on the curtain length.

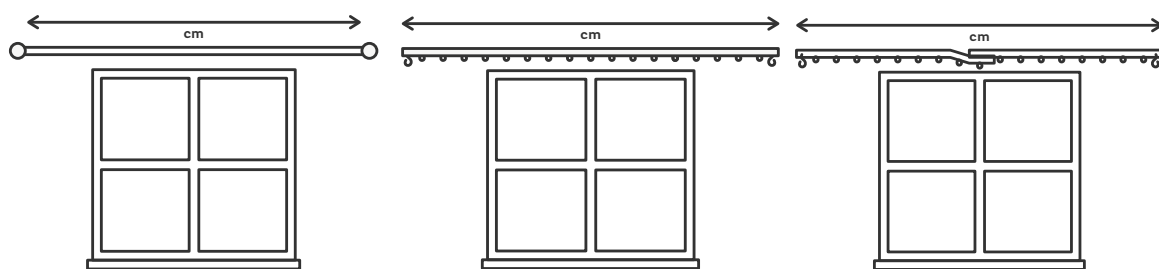
Decide where you want your curtain to finish. Recommended choices include:

- To window sill**  
measure 1cm above sill
- Below sill**  
measure 15cm below sill and allow 2cm above any radiators.
- Floor length**  
Measure 1cm from the floor.



## 4 Decide on the curtain width.

Decide how wide you want your curtains to be. Depending on the type of pole/track you choose:



### Curtain Pole.

Measure in cm's between the decorative ends of the pole.

### Tracks.

Measure in cm's the full width of the track.

### Overlapping tracks.

Measure in cm's the full width of both tracks and add them together.

Note: The width stated will be the width of each individual curtain. All curtains wider than 137cm will have a join in the fabric.

You will be required to enter your desired width and drop on the product page so please make a note of the exact measurements.